

Adding Double Sided – Single Mount to your Roll Sign Print

What's the purpose of this setup step?

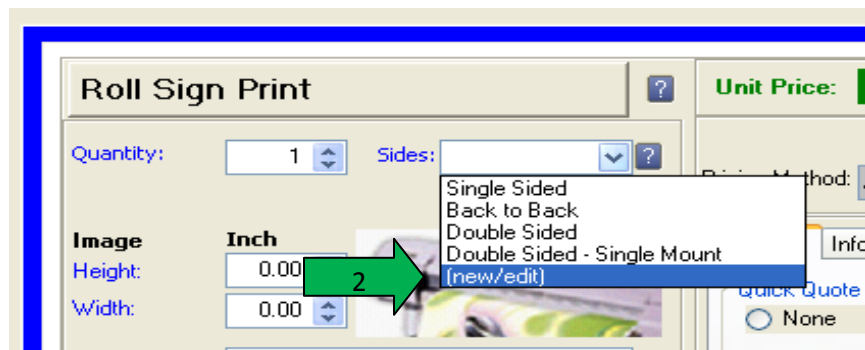
To create an additional option on the Roll Sign pricing form for estimating the printing to two pieces of material and mounting to a single rigid substrate.

This will involve:

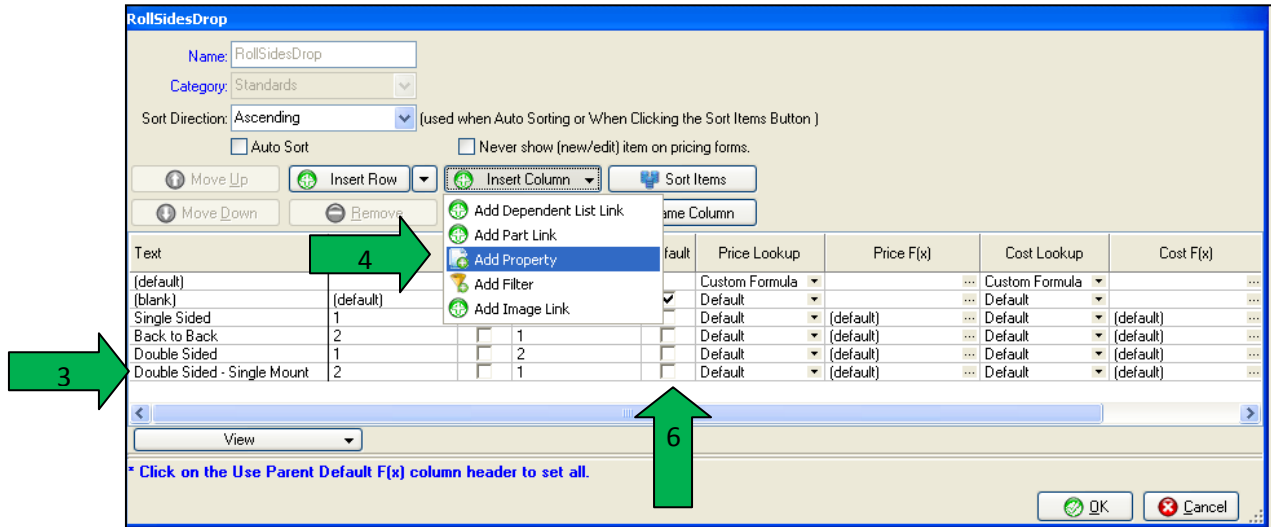
- A. Modifying the Selection List
- B. Replacing the formula in the *Flatstock Layout* variable with a new one.

A. Modifying the selection list.

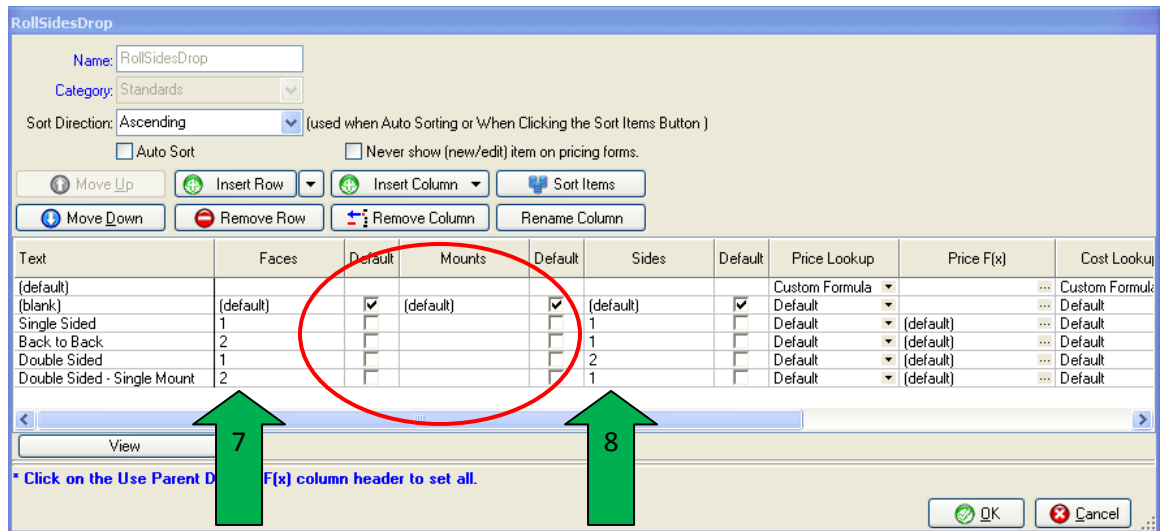
- 1) Open the Roll Sign Print Product and click **Sides**.
- 2) From the Drop Down Selection List, click **(new/edit)**.



- 3) When selection list opens, click on **Insert Row**. In the **Text** field of the new row, type “Double Sided – Single Mount.”
- 4) Next, select the drop down next to **Insert Column** and click **Add Property**.
- 5) When prompted for **Property Name** enter: Mounts.
- 6) In the **Default** column next to Mounts, starting from the bottom, moving upwards, uncheck four of the check boxes, so that the word (default) disappears from the Mounts column.



- 7) In the **Faces** column for the row you just created, enter a value of 2.
- 8) In the **Sides** column of the row you just created, enter a value of 1.



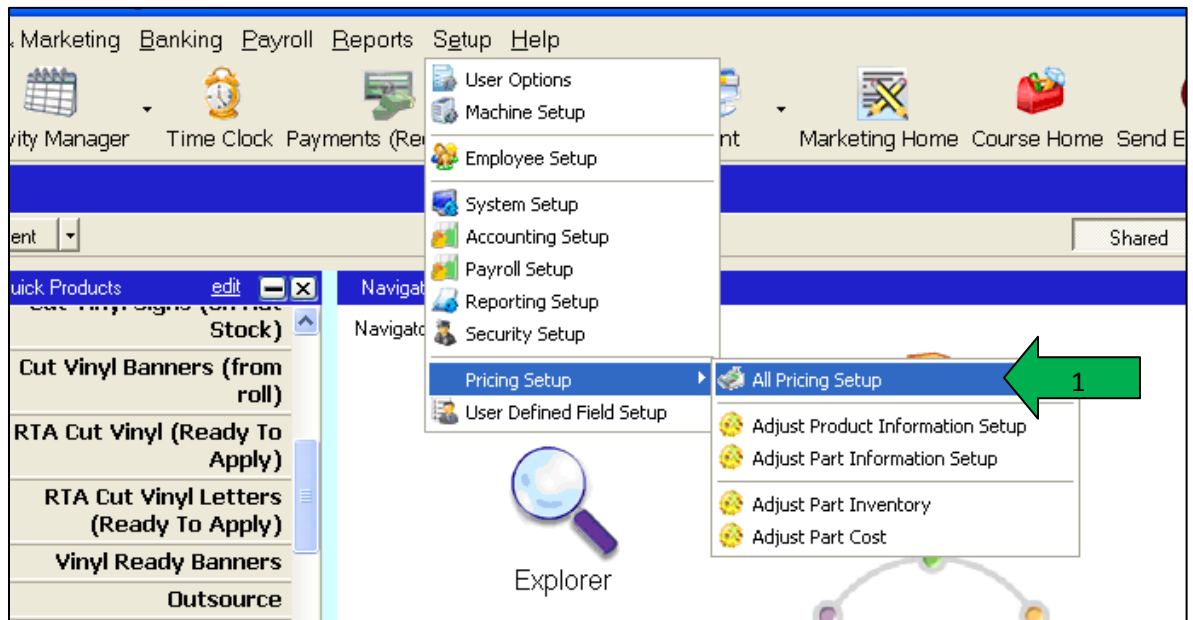
- 9) In the **Mounts** column from the bottom up enter the following values: 1,1,2,1 so that the column now looks like this:

default	Mounts	De
<input checked="" type="checkbox"/>	(default)	
<input type="checkbox"/>	1	
<input type="checkbox"/>	2	
<input type="checkbox"/>	1	
<input type="checkbox"/>	1	

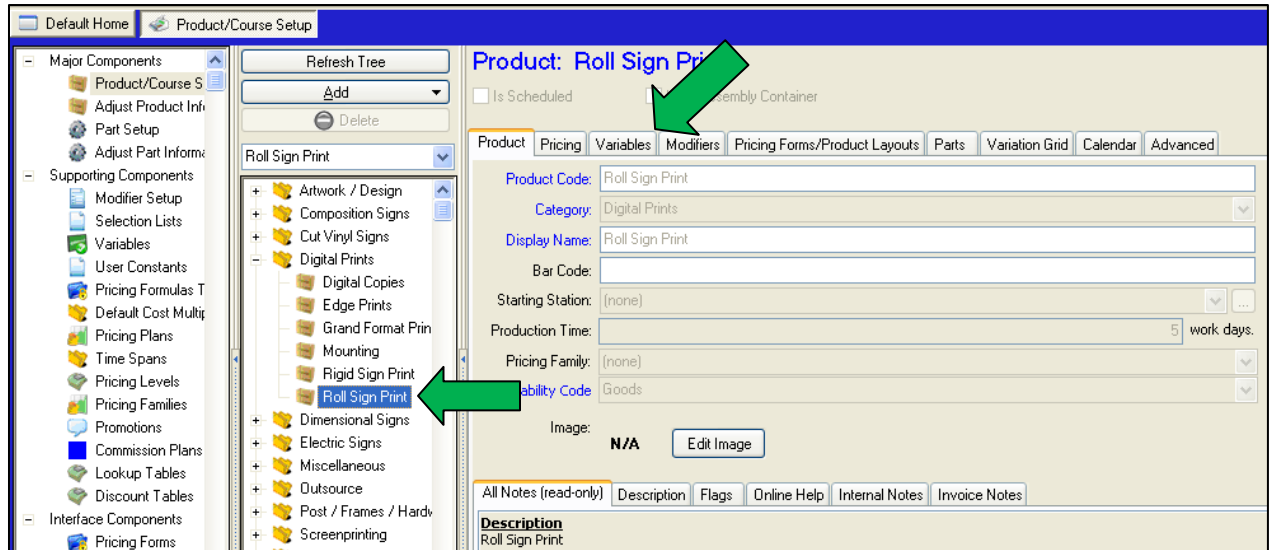
- 10) Click **OK** in the lower right corner. You are done with the selection list.
 11) You are back at the Roll Sign Print pricing form, click **OK** to get out of the pricing form.

B. Modifying the Variable

- 1) In Control, click **Setup**, then click **Pricing Setup**, then click **All Pricing Setup**



- 2) At the next screen, expand **Digital Prints** and select **Roll Sign Print**, then click on the **Variables** tab.



3) Once you have selected the **Variables Tab**, scroll down to expand **Flat Stock Substrates**, and then expand **Flat Stock Material Layout** and locate and click on the variable **Flatstock Layout**.

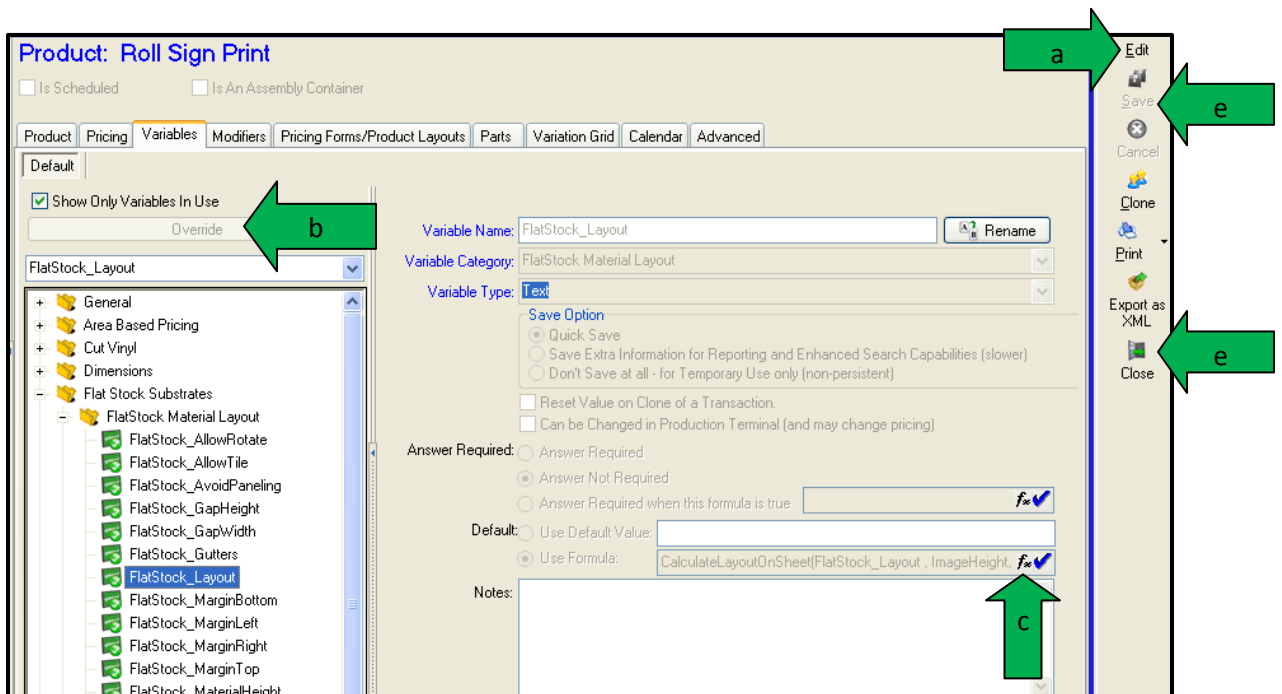
4) Do the following exactly as described.

- a) Click **Edit**.
- b) Click **Override** (if **Override** button says **Restore**, ignore this step).
- c) Next to **Use Formula:**, select **fx**.
- d) When the formula window opens, **delete** the old formula. Next **copy** the following formula into the formula window: (be certain that the text below is the only text you copy and paste)

```
CalculateLayoutOnSheet(FlatStock_Layout , ImageHeight,ImageWidth,(Quantity *
ListPropertyValue(SidesDrop,"Mounts",1)), IF
ListPropertyValue(SidesDrop,"Faces",1) > 1 Then True else False
endif,FlatStock_MaterialHeight,
FlatStock_MaterialWidth,FlatStock_GapHeight,FlatStock_GapWidth,FlatStock_MarginTop,
FlatStock_MarginBottom,FlatStock_MarginLeft,FlatStock_MarginRight,FlatStock_SheetMarginTop,
FlatStock_SheetMarginBottom,FlatStock_SheetMarginLeft,FlatStock_SheetMarginRight,FlatStock_Overlap, FlatStock_AllowRotate, true,true)
```

And **Paste** into the formula field making sure that **all** of the old formula has been deleted. Click **OK** to get out of the formula screen.

- e) Click **Save**, then click **Close** to close all Pricing Windows. You can now price Double Sided – Single Mount signs.



You're finished adding this feature to your Roll Sign Print pricing form. We hope it's a valuable tool for your business.